



## ODM Dump Truck Heavy Duty 8x4 276kW For Construction

Our Product Introduction

### Basic Information

- Place of Origin: hubei, China
- Brand Name: DONG FENG
- Certification: CCC
- Model Number: DFL3310A14
- Minimum Order Quantity: 1unit
- Price: USD35000~55000/unit
- Packaging Details: Naked
- Delivery Time: 25days
- Payment Terms: L/C, T/T, Western Union
- Supply Ability: 1000units/month

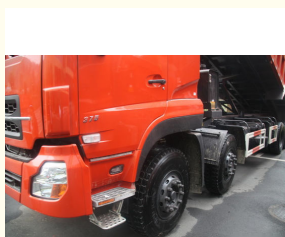


### Product Specification

- Model Number: DFL3310A14
- Overall Dimension: 10890\*2500\*3760mm
- G.V.W: 31000kg
- Curb Weight: 15200kg
- Wheel Base: 1850+4200+1350mm
- Cargo Box Size: 7800X2350X1500mm
- Front Tread: 2040/2040mm
- Rear Tread: 1850/1850mm
- Engine Type: YC6MK375-33, Diesel
- Max. Output Torque: 270N·m
- Max. Power: 276kW
- Max Speed: 110km/h
- Max Torque: 1650N·m
- Displacement: 10.338L
- Highlight: **ODM Dump Truck Heavy Duty,**



### More Images



for more products please visit us on [battery-generator.com](http://battery-generator.com)

## Product Description

Heavy Duty Dump Truck 8x4 276kW Heavy Duty Tipper Trucks 75T Loading Capacity

### Products HD Picture



### DONGFENG Trucks Features

Always driver-focused, the dashboard is curved for better ergonomics and the control instruments are made to be easy to read and reach. The steel structure is reinforced to prevent the cab from being damaged by unexpected debris fall.

To provide the driver and passengers a stronger security, we made sure to meet the European collision standards, the most demanding in the world.

### 75T Heavy Duty Dump Truck 8x4 276kW products detailed specifications

Model	DFL3310A14
Driving Form	8*4
Overall Size	10890*2500*3760mm
Wheel Base	1850+4600+1350mm
G.V.W	31000kg
Curb weight	15200kg
Cargo Box Dimension	8200*2300*975mm
Rated Loading Capacity	5.065T
Max Speed	90km/h
Wheel Track	F/R 2040/1850mm
Fuel Type	Diesel
Cab	
Engine Model	dCi375-30
Power(Kw/HP)	276kw
Maximum torque(N.m)	1700
Displacement(L)	11.12L
Emission Standard	Euro III
Transmission	12JSD180TA
Rear Axle Loading	18000kg
Speed Ratio	5.26
Tires	12.00R20, 12pcs
Fuel tank	350L

### FAQ

Q:How about the delivery time?

A: Most of our trucks are all have in stock ,We can delivery to you within 7 days after order confrimed

Q:How about shipping ?

A: Big size trucks always shipping by RORO or Bulk ship or flat bed container or open top container, small type can shipping by container ,

Pls contact us to get a shipping quotation .

Q: How many trucks does your factory produce per years?

A: Almost 3000 units

Q: How about your product After-sales service system?

A: Our main export country have accepted after-sales service,some of country used the third department service.

Q: Do you accept Custom orders? What's is your MOQ order?

A: Yes, we do, our MOQ is depends on exact model, mostly is 1 unit.

Q:Which country do you have exported to?

A: our special trucks can be found in many parts of the world, such as Russia, Ukraine,Uzbekistan,Jordan, Chile, Brazil, Thailand, Malaysia, Lebanon etc, and gain good reputation from local market.

Q: Can I Customize vehicles?

A:We could also customize the vehicles according to the demand of the end markets, technical and equipment modification as per demand.



**HaiNan SynYune EV Technology Co.,Ltd**



SYJackie@163.com



battery-generator.com

No. 4 Jipu Road, Xinyingwan District, Yangpu EDZ, Hainan Province